

# USER MANUAL



**SPAtec**

PLEASE, READ THESE INSTRUCTIONS CAREFULLY BEFORE INSTALLING AND USING THE [HOTTUB](#)

REMEMBER TO REMOVE ALL SEALS BEFORE CONNECTING THE SPA, ESPECIALLY THE PLASTIC SEAL ON THE FILTER.

REMEMBER THAT THE ELECTRICAL INSTALLATION MUST BE CARRIED OUT BY A PROFESSIONAL.

KEEP IN MIND THAT THE SPA MUST BE DISCONNECTED FROM ALL ELECTRICAL WIRING WHEN EMPTY.

REMEMBER THAT FILTERS MUST BE RINSED WITH PRESSURIZED WATER WEEKLY. THEY ALSO MUST BE REPLACED WITH NEW ONES AFTER 6 MONTHS APPROXIMATELY ``OR`` WHEN THE SPA HAS BEEN EMPTY FOR MORE THAN 20 DAYS.

A FILTER IN BAD OR DIRTY CONDITION CAN BLOCK THE DUCTS AND DAMAGE THE PUMPS.

FAILURE TO FOLLOW THESE INSTRUCTIONS WILL RESULT IN THE INVALIDATION OF YOUR SPA'S WARRANTY.

# INDEX

I. Installation of your SPATEC outdoor SPA.....	2
1. Choosing a location .....	2
2. Electrical Installation (Wiring).....	2
3. Electrical Installation Diagram .....	3
4. Filter and Aromatherapy Installation.....	4
4.1. Filter Installation in skimmer Type 1.....	4
4.2. Filter Installation in skimmer Type 2.....	4
4.3. Filter Installation in skimmer Type 3.....	5
5. Aromatherapy Installation .....	5
II. Filling and emptying your SPATEC outdoor SPA.....	6
III. Maintenance .....	7
1. Preparing your SPA for winter.....	7
IV. Problems and Solutions.....	8
V. NOTICE.....	11

# I. Installation of your SPATEC outdoor SPA

## 1. Choosing a location

Outdoor SPAs are large, heavy appliances and do not have height-adjustable legs so they need a firm, level and smooth base. The dimensions of the base should be at least equal to the size of the SPA, although it would be recommended to have a base that's a few cms wider.

We'd advise to make the concrete base with a thickness of 10cm or more. It could also be made with wooden blocks as long as it is hard enough and made to withstand a high level of humidity..

It is the user who assumes full responsibility for a correct installation, use and maintenance of the SPA. If the SPA is placed in an unsuitable location, over time the device could start to sink or tilt to one side and suffer significant damage which would in no case be covered by guarantee.

If the user decided to make an in-ground installation, access to all sides of the SPA from below or above (so that the equipment can be reachable for necessary maintenance in the future) must be taken into account. In extreme cases, access may only be allowed from two sides, although we do not recommend this option in any case.

In the event of a breakdown, the client must ensure that the technician has adequate access to the spa.

The place where you install the SPA must have a drainage system to prevent the accumulation of water under or around the device.

## 2. Electrical Installation (Wiring)

Spatec outdoor spas are designed to operate on the European electricity network (220V-230V 50/60Hz). Please, remember:

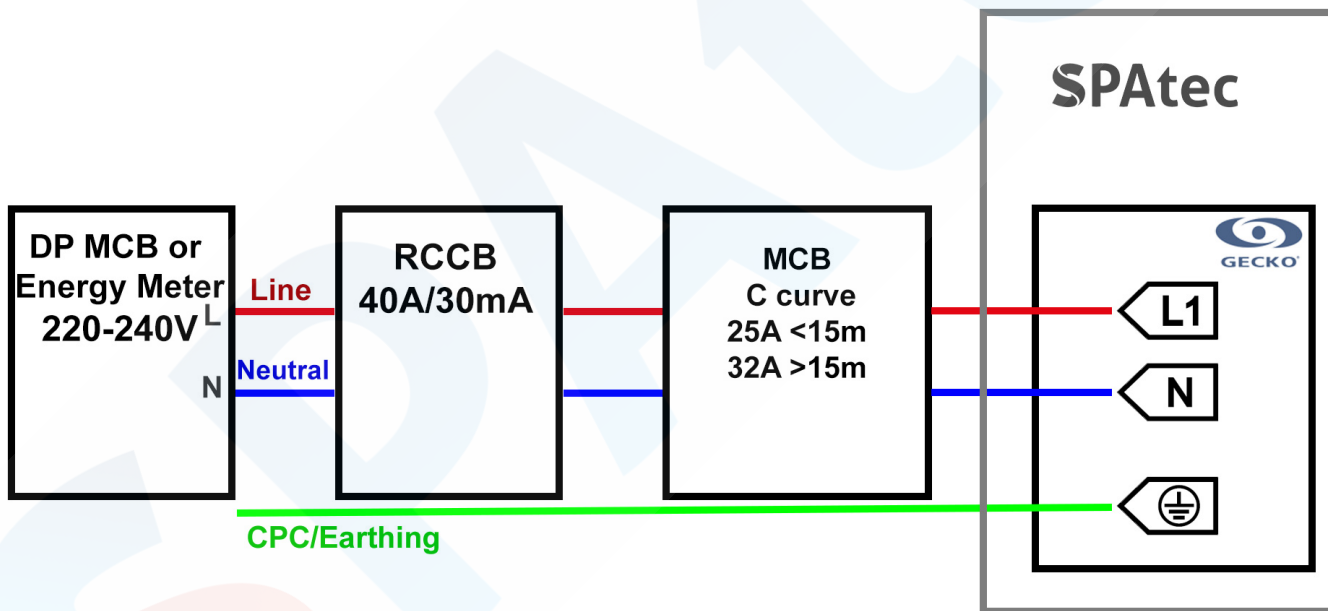
- Do not connect the SPA to the electricity network before filling it with water.
- Do not connect the SPA to the electricity network using an extension cord.
- Use copper cables.
- The installation must be carried out in such a way that within a radius of 1.5m of the SPA there are no connections, plugs or similar unless they have proper protection against water.
- The installation must be carried out by an electrician or professional

- A bad electrical installation can cause serious damage to both the SPA and its users, which in no case would be covered by the guarantee of the device.

The Spatec SPA requires an independent line (i.e. a line from the general box to the SPA) with a Differential Switch (RCCB) and Miniature Circuit Breaker (MCB) only for this line (installed in the general box).

The electrical line must be made of cables between 6mm and 10mm depending on the model of the SPA and the distance between the SPA and the general box of the house (if the distance exceeds 15m you will have to use thicker cable).

### 3. Electrical Installation Diagram



\* **Diameter of the line, neutral and ground cables: 6mm<sup>2</sup>** if the distance between the DP MCB and the Spatec SPA is less than 15 meters or **10mm<sup>2</sup>** if it is greater.

\*\* Installation diagram for single-phase current, for other types of installation, contact us.

## 4. Filter and Aromatherapy Installation

### 4.1. Filter Installation in skimmer Type 1



1. Loosen the screw and remove the skimmer cover by sliding it up, do not pull it out.
2. Remove the internal skimmer tray (if there is one).
3. **Remove the protective plastic from the filter** and screw it into the skimmer.
4. Put the tray and the skimmer cover back in place.

### 4.2. Filter Installation in skimmer Type 2



1. Remove the tube from the skimmer.
2. **Remove the protective plastic from the filter** and screw it into the skimmer.
3. Put the skimmer tube back in its place (this element floats, to adapt to the water level).

Note: (First installation)

If you receive the Spa with the skimmer trim (washer) removed, simply place it in position and screw it on. This element must be placed first (before the tube and filter are installed) and does not have to be removed again, either for filter changes or maintenance.

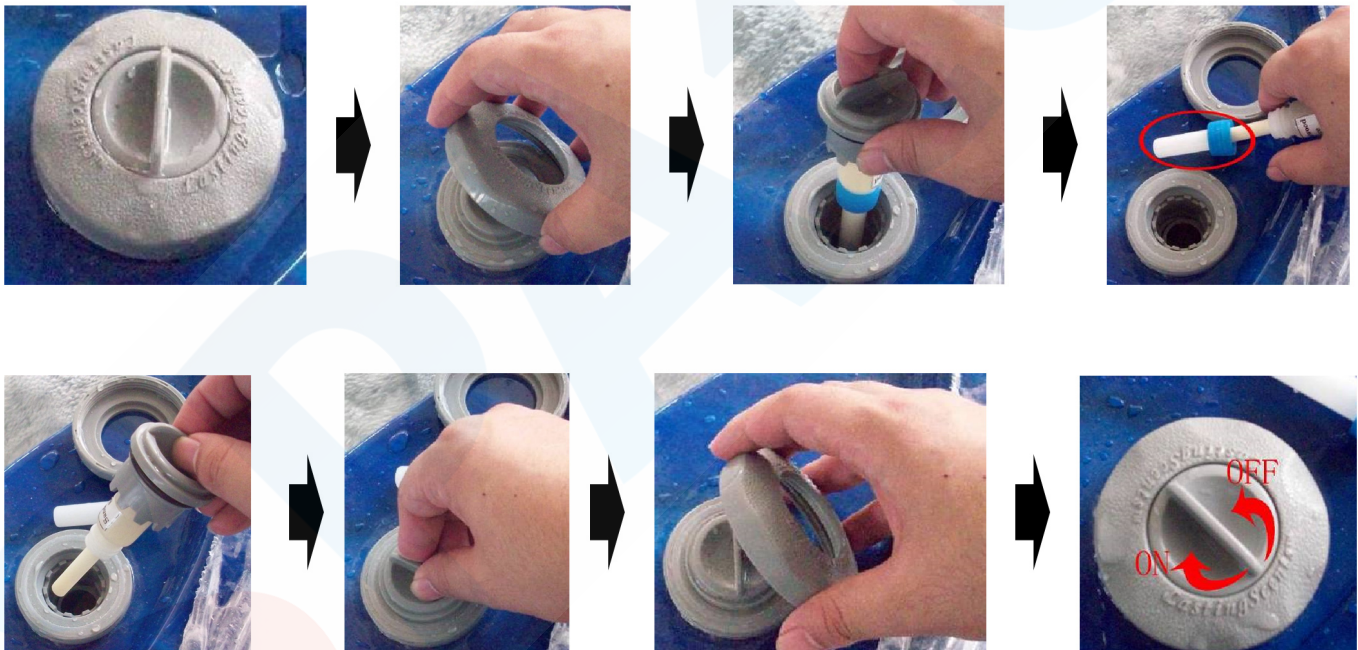


### 4.3. Filter Installation in skimmer Type 3



1. **Remove the protective plastic** from the filter
2. Screw it into the skimmer.

### 5. Aromatherapy Installation



1. Unscrew the trim ring.
2. Remove the dispenser.
3. Install the aromatherapy cartridge.
4. **Remember to remove the plastic protector** from the tip of the cartridge before installing it.
5. Put the dispenser and trim ring back into place.
6. Turn the dispenser on or off to activate or deactivate the aromatherapy.

## II. Filling and emptying your SPATEC outdoor SPA

Once the wiring has been carried out, the SPA can be filled. Make sure that no electrical equipment is located near or inside the SPA and that all electrical connections are well protected against water.



Before filling the SPA, clean any kind of residues that may remain inside. For security reasons, make sure that the differential switch in the electrical line that feeds the SPA is lowered so that no electricity is applied. Do not fill the SPA with water from a water softener. Use normal water plus an anti-scale product.

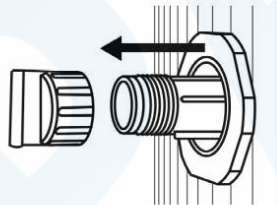
In some models, you can fill the SPA from the water inlet on one of the sides, but it is recommended that you fill it using a hose, from the top. Fill the SPA until it covers a few centimeters above the jets. Keep in mind that once people enter the SPA the water level will rise.

When the water has reached the desired level, stop the water. Now you can turn on the differential switch in the electric line so that the SPA gets electricity. You can also add the water maintenance and PH adjustment products in the water.

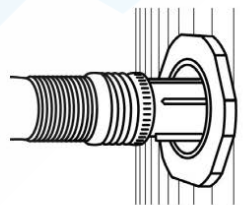
### FILLING AND EMPTYING YOUR SPA (INSTRUCTIONS)



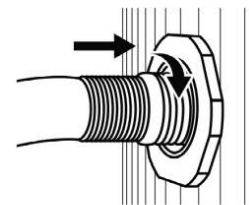
1. CLOSED VALVE.



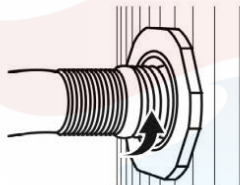
2. Pull backwards to remove the valve and take off the cap, keep it in a safe place



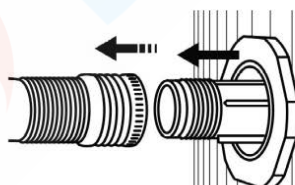
3. Connect the hose with the valve.



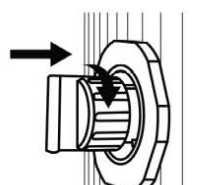
4. To open the valve, turn it 1/4 clockwise and enter 1/2 of its total length.



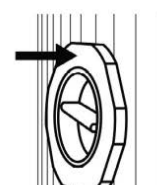
5. Once you've finished emptying/filling the SPA, turn the valve 1/4 counter-clockwise and remove it completely



6. Remove the hose and put the cap on



7. While the cap is on, turn it 1/4 clockwise and push it back to its closed position.



8. Closed valve.



## III. Maintenance

Spatec spas are equipped with a filtration system for solid waste and an ozone cleaning system that disinfects the water by eliminating most bacteria. However, for a longer duration of the water in good conditions we recommend the use of several maintenance chemicals specific to SPAs.

*Although they are cheaper, chlorine-based products are harmful to your skin, eyes as well as to the spa in the long run. We recommend bromine-based products.*

*Always use products designed for SPAs; products designed for swimming pools can leave residues, stain the acrylic or produce foam.*

To ensure good maintenance, cleaning of the spa and guarantee its conservation, it is advisable to follow the following steps:

1. Daily monitoring of the water's pH level and residual bromine levels, both of which can be easily measured with a water test kit.
2. The pH must be between 7.2 and 7.8, and must be regulated with the appropriate dose of pH booster or reducer, as appropriate.
3. Bromine levels must be between 3 and 6 parts per million (ppm).

*It is recommended to clean the inside of the spa with liquid detergent, soap and a soft sponge. Do not use abrasive detergents, alcohol, acetone or other solvents.*

**Remember that the filter has to be cleaned with water at pressure weekly and has to be replaced with a new one after 6 months or when SPA remains empty for more than 20 days, to avoid damaging the SPA's machinery and invalidating the guarantee.**

### 1. Preparing your SPA for winter

If you will not be using the spa during severe cold weather, we recommend that you take the following steps:

1. Disconnect the spa from the mains.
2. Drain the water through the drain valve until the spa is completely empty.
3. Remove the filters. Remember that you will need to install new filters when you use the spa again.
4. Disconnect the water pumps so that water is drained from the pipes, for neutralizing the risk of internal condensation or freezing.
5. Dry the pipes: Any water left in the pipes can be sucked out by air and water jets through a liquid suction pump. Make sure the spa jets are open before performing this operation.
6. Dry all remaining water at the bottom of the spa.

## IV. Problems and Solutions

PROBLEM	CAUSE	SOLUTION
<b>SPA won't turn on.</b>	<ol style="list-style-type: none"> <li>1. RCCB went off.</li> <li>2. Bad connection between the control panel and the main electrical box.</li> <li>3. Check if the transformer or fuses are burnt.</li> </ol>	<ol style="list-style-type: none"> <li>1. Switch on all switches again.</li> <li>2. Check the connection and reconnect the control panel cable.</li> <li>3. Replace the transformer or fuse.</li> </ol>
<b>Abnormal temperature and water pump does not work.</b>	<ol style="list-style-type: none"> <li>1. The water level in the spa is too low.</li> <li>2. The temperature setting is too low.</li> </ol>	<ol style="list-style-type: none"> <li>1. Add water.</li> <li>2. Raise the water temperature from the control panel.</li> </ol>
<b>The LED spotlight does not work.</b>	<ol style="list-style-type: none"> <li>1. Poor connection of the cable from the electrical box to the bulb.</li> </ol>	<ol style="list-style-type: none"> <li>1. Check and reconnect the cable.</li> </ol>
<b>Water or air pump does not work.</b>	<ol style="list-style-type: none"> <li>1. The water level in the spa is too low.</li> <li>2. Poor connection of the cable from the electrical box to the pump.</li> </ol>	<ol style="list-style-type: none"> <li>1. Add water.</li> <li>2. Check and reconnect the cable.</li> </ol>
<b>The buttons on the control panel do not respond.</b>	<ol style="list-style-type: none"> <li>1. Control panel might be blocked.</li> <li>2. Control panel might be broken.</li> <li>3. Bad connection of the cable that goes from the electrical box</li> </ol>	<ol style="list-style-type: none"> <li>1. Unblock control panel.</li> <li>2. Check and reconnect the cable.</li> </ol>

<b>Cloudy water.</b>	<ol style="list-style-type: none"> <li>1. The filter is dirty.</li> <li>2. Excess oil or organic matter.</li> <li>3. Suspended particles or organic matter.</li> <li>4. Old or overused water.</li> </ol>	<ol style="list-style-type: none"> <li>1. Clean the filter.</li> <li>2. Apply a shock treatment with disinfectant*.</li> <li>3. Adjust the pH of the water and clean the filters more frequently.</li> <li>4. If the problem persists, empty, clean and refill the spa.</li> </ol>
<b>Smelly water.</b>	<ol style="list-style-type: none"> <li>1. Excessive organic substances in the water.</li> <li>2. Low pH level.</li> </ol>	<ol style="list-style-type: none"> <li>1. Apply a shock treatment with disinfectant*.</li> <li>2. Increase the amount of bromine you use. Adjust the pH of the water and clean the filters more frequently.</li> <li>3. If the problem persists, empty, clean and refill the spa.</li> </ol>
<b>Very strong chlorine smell.</b>	<ol style="list-style-type: none"> <li>1. Very high chlorine/bromine level.</li> <li>2. Low pH level.</li> </ol>	<ol style="list-style-type: none"> <li>1. Reduce the amount of bromine used.</li> <li>2. Adjust the pH to the recommended level.</li> </ol>
<b>Mouldy smell or appearance of algae.</b>	<ol style="list-style-type: none"> <li>1. Growth of bacteria or algae.</li> <li>2. High level of pH.</li> <li>3. Low chlorine/bromine level.</li> <li>4. Low algaecide level.</li> </ol>	<ol style="list-style-type: none"> <li>1. Apply a shock treatment with disinfectant*.</li> <li>2. Increase the amount of bromine you use. Adjust the pH of the water and clean the filters more frequently.</li> <li>3. If the problem persists, empty, clean and refill the spa.</li> </ol>

**Accumulation of organic substances / kerb of dirt around the glass.**

1. Oil and dirt accumulation.

1. Wipe off the dirt with a clean cloth. If the problem persists, empty, clean and refill the spa.

2. Shower before using the spa and limit the use of sunscreen or makeup.

**Excess foam.**

1. Use of non-specific chemicals for SPAs.

2. Use of standard algicide.

1. Do not use chemicals for swimming pools, use specific products for SPA.

2. Always use non-foaming algaecides.

\*Shock treatment: Crush 2-3 bromine tablets and add them to the usual bromine dose.

## V. NOTICE

Do not let children use the SPA without adult supervision.

If you connect a hot water inlet to the SPA, make sure that the water that reaches it never exceeds 41°C as this could cause significant damage to your SPA and to the users.

Although the temperature of the water can be adjusted according to personal preference, temperatures around 38-39°C are considered the maximum that a healthy adult could tolerate for a maximum of 10 minutes. For longer sessions, adjust the water temperature to 37°C or less.

If you are pregnant, you should consult your doctor before using the SPA.

Never use the SPA after taking medication, alcohol or drugs as their consumption could cause you to faint in the tub.

If you suffer from respiratory insufficiency, diabetes, high or low blood pressure and/or other health problems, consult your doctor before using the SPA.

Always take a shower before and after using the SPA to prevent infections caused by possible bacteria in the water.

Before entering the SPA check the water temperature by hand as the temperature displayed on the control panel and the actual water temperature may differ by up to 2°C.

Do not use electrical devices near or from inside the SPA.

Enter and exit the spa slowly, keeping in mind that wet surfaces can lead to slipping.

Exposure for long periods of time to temperatures above 37°C can cause Hyperthermia.